



**Amish Handcrafted  
Maintenance Free  
Poly Outdoor Furniture**

**Product Catalog**

# The Benefits of Poly Furniture

- Made from 100% recycled plastic
- Poly lumber has a UV ray protector to minimize fading
- Maintenance free
- Will not mildew, crack, warp, or rot
- Will withstand the harshest environments
- Termite resistant

## WARRANTY

20 years residential use • 5 years commercial use

## Features

- Hidden screws where possible
- All stainless steel hardware
- Aluminum bracing where needed
- Powder coated steel swivel (50 Ball Bearing)

*Each piece of furniture is individually handcrafted by skilled artisans who utilize building methods handed down through the generations. We use only first-rate materials & responsible building practices. We are always adding to our line of products & customize to your specs for an additional price percentage.*

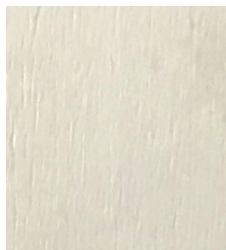
*Place yourself outdoors with our line of furniture and view the amazing possibilities with the integration of style & design. Consider adding a brightly colored pair to your outdoor decor for a fun splash of color!*

# Products are Available in 16 Different Colors

For 2-Tone Furniture

Any Color Combination is Available

1st color is the base & frame • 2nd color is the seat & back



**WHITE**



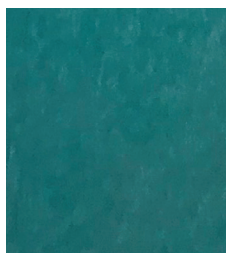
**YELLOW**



**TANGERINE**



**LIME GREEN**



**ARUBA**



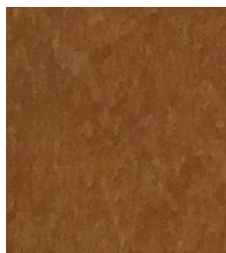
**RED**



**PATRIOT**



**BLUE**



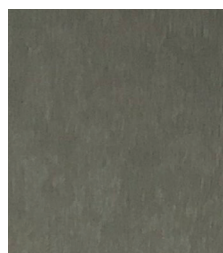
**CEDAR**



**CHERRY**



**BLACK**



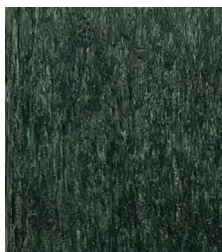
**SLATE**



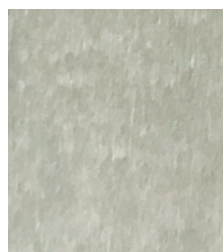
**BROWN**



**WEATHERED  
WOOD**



**WOODLAND  
GREEN**



**LIGHT GRAY**



# Multi-Color Samples

Our NEW Multi-Color Options have become an instant best seller. At this point we only have certain profiles available.

We can only use multi-colors as in two tone combinations with the 2nd color always being the multi-color.

*Put your own combination together for a "Like No Other Look"*



**OPEN SEA**



**BLUEBERRY**



**IT'S A BOY**



**DREAMSICKLE**



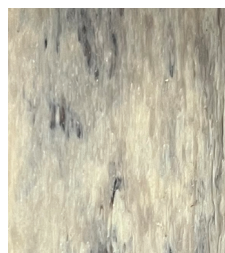
**STONE**



**MARBLE**



**GRABE**



**SPECKLED  
MAPLE**



**BARN BOARD**



**WALNUT**



# POLY WOOD

PolyTuf HDPE plastic lumber is custom-extruded from purified blends of recycled plastics - the kind that come from milk and detergent bottles. Additional proprietary additives are compounded into each product to meet the specifications of each of our customers for their unique applications. UV - inhibited pigments, anti-oxidant processing aids, foaming agents and other compounds are introduced depending on the end use and each customer's performance requirements.

## FEATURES

- Manufactured to exacting specifications with tolerances to meet the toughest applications.
- Material is easily machined with any tools appropriate for working with real wood.
- Essentially maintenance free, with exceptional resistance to moisture, fading, insects, splinting, warping and other hazards of environmental exposure common to wood or wood fiber composite products.
- Requires no waterproofing, staining or other similar recurring maintenance other than an occasional washing with soap and water.
- High color stability UV pigment systems which minimize material breakdown from prolonged sun and weather exposure.
- Unlike most wood and wood composite products that quickly fade when exposed to the weather, PolyTuf™ has no wood fibers, retains its vibrant look for years and may fade only slightly over its entire service life.
- PolyTuf 1™ plastic lumber is well suited for exterior applications where resistance to weathering and minimal maintenance is required, and a quality appearance is essential. PolyTuf maintains its color stability and surface finish over its entire useful service life, and never needs to be sealed, painted or stained.

## ENVIRONMENT

Customers concerned about the environment can feel confident that they have made a good decision for the environment by using poly products.

Our plastic lumber products are manufactured with a blend of virgin and/or recycled HDPE plastics - the kinds found in milk bottles. In fact, we recycle over 115 million plastic bottles a year - keeping tons and tons of plastics out of landfills every year.

Unlike other types of plastic, HDPE is the most environmentally stable — giving off no harmful fumes into the environment. The Healthy Building Network recommends HDPE resin - based products as the most environmentally friendly plastic building materials.

Our products are designed to hold up to all kinds of adverse weather conditions for decades. And when they are finally ready to be replaced, the materials can be recycled again into new useful products.

**Fan Back Swivel Glider Set** FB100  
**w/Rounded End Table w/Cup Holders** RETCH

*Pictured in brown/weathered wood*



FB100  
**Classic Swivel Glider**

*Pictured in  
woodland green/weathered wood*



FB102  
**Classic Glider**  
**w/Cup Holder**

*Pictured in slate/light gray*

# Classic Glider w/Gliding Ottoman & 22" Deluxe End Table

*Pictured in white/cedar*

FB102



**DET22  
Deluxe  
End  
Table**

*Pictured in  
brown/  
weathered wood*



**RETCH  
Rounded  
Edge End  
Table w/  
Built-In Cup  
Holders**

*Pictured in  
woodland green/cedar*

*Also available  
without cup holders.*

## **GO20 Gliding Ottoman**

*Pictured in  
woodland green/weathered wood  
Also available stationary.  
See STO stationary Ottoman  
for price*



**FB108  
Stationary  
Adirondack  
Chair**

*Pictured in  
woodland green/  
weathered wood*



## GET PATRIOTIC!



**Green Bay**

**Cardinal**

**Hawkeye**



AFC104

### **Classic Folding Adirondack Shown w/FET Folding End Table**

*Pictured in  
tangerine/white*



FET20  
**Folding  
End Table**



AFC  
**Classic  
Folding  
Adirondack**

## 5' Fan Back Glider w/Flip Down Cup Holders

*Pictured in slate/marble*

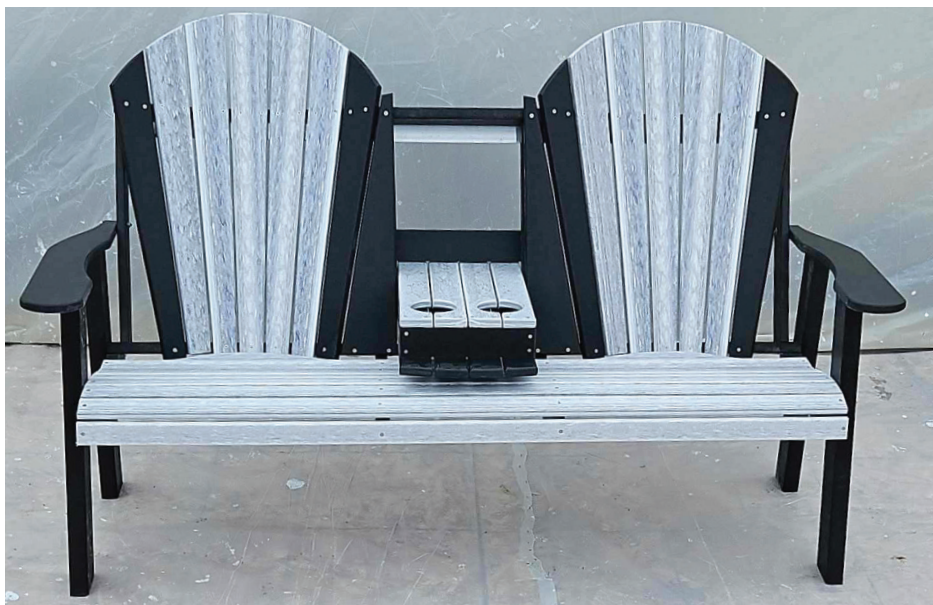
FBG5



## 5' Fan Back Stationary Bench w/Flip Down Cup Holders

*Pictured in black/marble*

FBS5





## 48" Fan Back Love Seat Glider

*Pictured in brown/weathered wood*

FB48



*Cup holder available on all items except swings.*

## Cup Holder

## 48" Fan Back Stationary

*Pictured in black/light gray*

48S







FBS5  
**5' Fan  
 Back  
 Swing  
 w/Flip  
 Down  
 Cup  
 Holders**

*Pictured in  
 woodland green/  
 marble*

FBS48  
**48"**  
**Love  
 Swing**  
 Powder  
 Coated  
 A Frame  
 Stand  
 Fits 4'x5'  
 Swings  
*Pictured in  
 brown/  
 weathered wood*



FB100

**Swivel  
Fan  
Back  
Glider  
w/Cup  
Holder &  
Gliding  
Ottoman**

*Pictured in red,  
white & blue*



PB116

**22" Plain Back  
Swivel Glider**

*Pictured in black/cherry*



**Plain Back Swivel Glider Set  
w/Rounded End Table & Cup Holders**

*Pictured in brown/cedar*

PB116





## Plain Back Single Glider

PB114

*Pictured in  
slate/aruba*



## 22" Plain Back Stationary Chair

PBS120

*Pictured  
in  
patriot  
blue/  
white*



## Plain Back Glider Set w/DET22 Square End Table & G.O. Gliding Ottomans

*Pictured in weathered wood/speckled maple*

PB114





PB118  
**5' Plain Back  
Glider w/Flip  
Down Cup  
Holders**

*Pictured in black/cedar*



PB110  
**5' Plain Back  
Glider**

*Pictured in black/cedar*

*Also available in  
swing style.*

*See PBS5  
5' Plain Back Swing  
for pricing*



PB112  
**4' Plain  
Back  
Glider**

*Pictured in cherry/light  
gray*





PBS5  
**5' Plain  
 Back Swing  
 w/Flip  
 Down Cup  
 Holders**

*Pictured in black/  
 barn board*



PBS48  
**4' Plain  
 Back  
 Swing w/  
 A Frame  
 Stand**

*Pictured in  
 black/brown*



## Curved Park Bench 60" Long

*Pictured in slate/aruba*



## Tete-A-Tete For Two *Pictured in solid aruba*

**Center Table Slides Out!**



*Available in Bar,  
Counter & Dining*



## Tete-A-Tete For Two

*Pictured in slate/blueberry*



## Tete-A-Tete For Two w/Cupholders

*Pictured in black/stone*



Size: 8' Tall & 50" Wide  
**Gigantic Chair  
 w/Steps**

*Pictured in black/red*  
 Draw customers for  
 photos or advertise w/  
 engraved logo!



FBPB  
**20" Fan Back Bar  
 Height Swivel  
 Patio Chair**  
*Pictured in brown/speckled maple*

FBPC  
**20" Counter Swivel  
 Fan Back Patio  
 Counter Chair**

*Pictured in black/walnut*



FBPD  
**20" Fan Back  
 Patio Dining  
 Swivel Chair**

*Pictured in black/yellow*



FBP-SG  
**22" Swivel Glider  
 Fan Back Counter  
 Patio Chair**  
*Pictured in black/light gray*

FBPCH  
**20" Bar Patio Chair  
 w/Cup Holder**

*Pictured in black/slate*



**All Patio Chairs Available in 20" & 22" widths for the same price.**



**All patio chair bases now  
w/rounded foot rests!  
No more shin kicking!**



**NEW!**



PBPB

## 20" Plain Back Bar Patio Chair

*Pictured in black/white*



## Stationary Saddle Chairs

*Available in Bar,  
Counter & Dining  
Heights. Pictured in  
brown/speckled maple*

## Swivel Saddle Chairs

*Available in Bar,  
Counter & Dining  
Heights.*

*Pictured in black/slate*



PBPC

## 22" Plain Back Counter Patio Chair

*Pictured in black/barn board*



## 20" Fan Back Swivel Glider Dining Patio Chair

*Pictured in black/walnut*

FBSG-DP



PBPD

## 20" Plain Back Dining Patio Chair

*Pictured in patriot/it's a boy*

**All Patio Chairs Available  
in 20" & 22" widths for  
the same price.**



PBPSG

## 20" Plain Back Swivel Glider Patio Chair

*Pictured in slate/aruba*



## **30" Round Counter Pedestal Table w/Two Plain Back Counter Patio Chairs**

*Pictured in black/aruba*

RPT30



## **30" Square Pedestal Table (Bar) w/out Umbrella Hole w/Two 20" FB Swivel Patio Bar Chairs**

*Pictured in slate/light gray*

SPT30



**All tables available in 3 different heights: Bar 42", Counter 36" & Dining 30".**

## 54" Round Patio Table w/Six 20" FB Patio Chairs

RT54C

*Pictured in light  
gray/slate*



### 54" Round Table

*Pictured in  
light gray/grabe*



## 39"x42" Counter Patio Table w/20" Swivel Glider Plain Back Patio Chairs

ST42

*Pictured in slate/aruba*



STC42

### 39"x42" Square Patio Table

*Shown in  
Counter Height*

*Pictured in slate/light gray*



**All tables available in 3 different heights:  
Bar 42", Counter 36" & Dining 30".**



## 45"x48" Counter Patio Table w/Four 22" Fan Back Counter Swivel Glider Patio Chairs

ST48

*Pictured in woodland green/open sea*

ST48  
**45"x48"**  
**Square**  
**Patio Table**  
Shown in Counter  
Height  
*Pictured in brown/cedar*



## Standard 7' Counter Table w/Six Plain Back Patio Chairs

*Pictured in brown/barn board*

STC7



**39"W x 7'L**  
**Standard Table**

*Pictured in brown/barn board*

**All tables available in 3 different heights:  
Bar 42", Counter 36" & Dining 30".**



ST7

## 39"x8' Standard Counter Table w/Eight 20" Counter Fan Back Chairs

*Pictured in  
black/walnut*



**39"x8'**  
**Standard Table**  
Shown in Counter Height.  
*Pictured in black/slate*



## 39"x6' Dining Set w/FBPD 20" Dining Swivel Chair

ST6D



*Pictured in  
patriot blue/  
weathered  
wood*

**All tables  
available  
in 3  
different  
heights:  
Bar 42",  
Counter  
36" &  
Dining 30".**

## 39"x6' Square Patio Table

Shown in Dining Height.  
*Pictured in patriot blue/weathered wood*





## **39"x6' Standard Table w/FBPC 20" Swivel Counter Chair**

Shown in Counter Height. *Pictured in brown/weathered wood*

ST6



## **39"x6' Square Standard 6' Table**

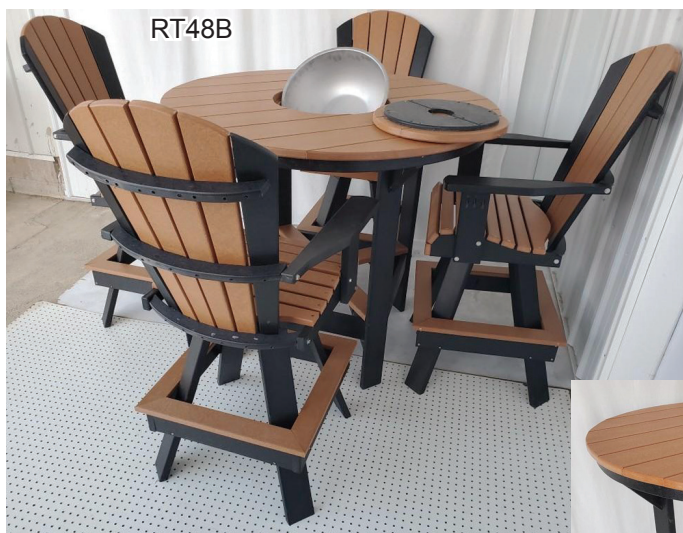
Shown in Bar Height *Pictured in slate/light gray*

ST6



**All tables available in 3 different heights: Bar 42", Counter 36" & Dining 30".**

## 48" Round Table w/Ice Bowl w/FBPB 20" Swivel Chairs



RT48B

Shown in Bar  
Height.  
*Pictured in black/cedar*

RT48B  
**48" Round  
Patio Table  
w/Ice Bowl**  
Shown in Bar Height  
*Pictured in black/cedar*



## 42" Round Table w/Ice Bowl & Chairs w/FBPC 20" Swivel Counter Chairs

Shown in Counter Height. *Pictured in black/slate*



RT24B

**All tables  
available in  
3 different  
heights:  
Bar 42",  
Counter  
36" &  
Dining 30".**

## 48" Standard Round Patio Table

Shown in Dining Height  
*Pictured in patriot blue/weathered wood*



RT48D



RT42



**42"  
Round  
Standard  
Table**

Both Shown in Counter Height  
& Pictured in black/cherry

**42"  
Round  
Bar &  
Counter  
Table  
w/Ice  
Bowl**

RT42B



## **39"W x 8'L Bar Table w/Fire Pit in Center in Bar Height w/FBPB 20" Swivel Bar Chair**

Includes: Tempered Fire Retaining Glass & Also Poly Insert When Fire Pit Not In Use.  
STFP *Pictured in slate/light gray*



## **25"W x 44"L x 26" High Fire Pit Entertainment Center**

Includes: Fire Retaining Flame Guard & Insert When Not In Use.



FPE



**Shown  
w/Insert**

## **42" Square Fire Pit Table w/Swivel Glider Fan Back 22" Patio Chairs**

Includes: Tempered Fire Retaining Glass & Also Poly Insert When Not In Use.



## **39"W x6'L Counter Table w/Fire Pit w/Counter Height Fan Back 22" Patio Chairs**

Includes: Tempered Fire Retaining Glass & Also Poly Insert When Not In Use.

Also Available in 39"x7' (STFP7) Pictured in weathered wood/brown STFP6



All tables available in 3 different heights: Bar 42", Counter 36" & Dining 30".



**Poly  
30  
Gallon  
Trash  
Cans**



Pictured  
At Left  
With Lid  
Up And  
Top Off

FB15

**15" Flower Box  
Planter**

*Pictured in black/white*



FB12

**12" Flower Box  
Planter**

*Pictured in brown/weathered wood*



## Various Poly Light House Options

Contact us  
for prices.



PBBL  
**Plain Back  
Beach  
Lounger**

*Pictured in slate*

FBBL  
**Fan Back  
Beach  
Lounger**

*Pictured in black/  
weathered wood*





# ENGRAVING

## Plain Back Swivel Glider Set w/Cup Holders w/22" Square End Table

PB116



## Poly Shelves

16" Long x 6" Deep



**CEDAR**

**ARUBA**

**OPEN SEA**

**BLUEBERRY**

**LIME**

**IT'S A BOY**



## Poly Waste Basket

Available Without  
Engraving  
Top Lifts Off For Easy  
Bag In-Out

*Pictured in black/red*

# ENGRAVING



**Mail Box**  
Multiple Color  
Options  
With or Without  
Engraved Name  
& Address



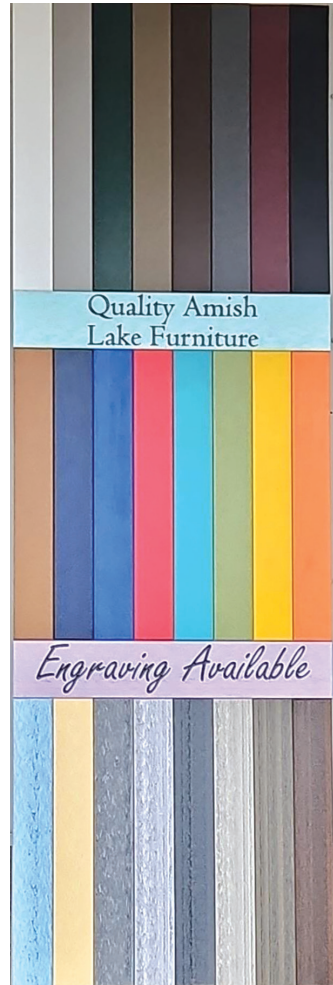
## 48" Fan Back Love Seat Glider

48F

*Pictured in slate*



## Dealer's Color Sample Demo



Size: 8' Tall  
& 50" Wide

## Gigantic Chair w/ Steps

*Pictured in black/red*

Draw customers  
for photos or  
advertise w/  
engraved logo!





**Your Local Authorized Dealer**

























